

BH 229 (LK 236) E Nā Lima Hana

Joe Camacho/David Haas, 1995 arr. R Mondoy 2002

Refrain $\text{♩} = 72$

Musical score for the Refrain section, measures 1-6. The score is for five instruments: Flute (Fl.), Recorder (Rec.), Oboe (Ob.), Clarinet (Cl.), and Bassoon (Bsn.). The key signature is B-flat major (two flats) and the time signature is common time (C). The tempo is marked $\text{♩} = 72$. The music features a melodic line in the flute and oboe, a rhythmic accompaniment in the recorder and clarinet, and a bass line in the bassoon.

Verses (3)

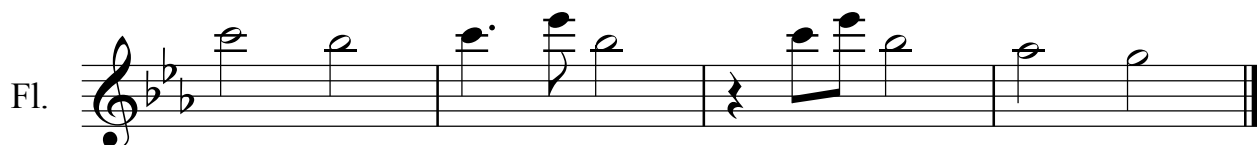
Musical score for the Verses section, measures 7-11. The score is for five instruments: Flute (Fl.), Recorder (Rec.), Oboe (Ob.), Clarinet (Cl.), and Bassoon (Bsn.). The key signature is B-flat major (two flats) and the time signature is common time (C). The music features a melodic line in the flute and oboe, a rhythmic accompaniment in the recorder and clarinet, and a bass line in the bassoon. A double bar line is present at the end of measure 7.

Musical score for the final section, measures 12-15. The score is for five instruments: Flute (Fl.), Recorder (Rec.), Oboe (Ob.), Clarinet (Cl.), and Bassoon (Bsn.). The key signature is B-flat major (two flats) and the time signature is common time (C). The music features a melodic line in the flute and oboe, a rhythmic accompaniment in the recorder and clarinet, and a bass line in the bassoon. A double bar line is present at the end of measure 12. The section concludes with a trill (tr) and a double bar line (D.C.) in measure 15.

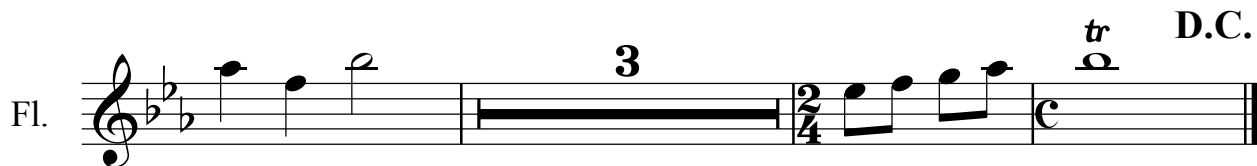
BH 229 (LK 236) E Nā Lima Hana

Refrain $\text{♩}=72$

Joe Camacho/David Haas, 1995 arr. R Mondoy 2002



Verses (3)



BH 229 (LK 236) E Nā Lima Hana

Joe Camacho/David Haas, 1995 arr. R Mondoy 2002

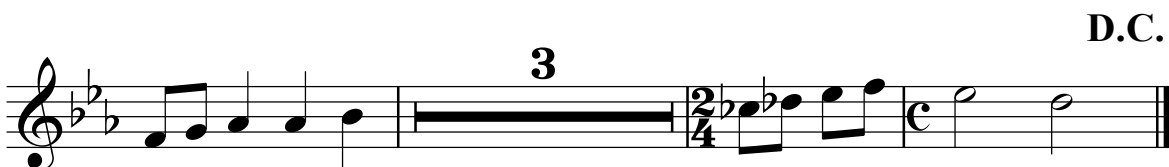
Refrain $\text{♩} = 72$

Ob. 

Ob. 

Verses (3)

Ob. 

Ob. 

D.C.

BH 229 (LK 236) E Nā Lima Hana

Refrain $\text{♩} = 72$

Joe Camacho/David Haas, 1995 arr. R Mondoy 2002

Cl.

Cl.

Verses (3)

Cl.

Cl.

D.C.

BH 229 (LK 236) E Nā Lima Hana

Refrain $\text{♩}=72$

Joe Camacho/David Haas, 1995 arr. R Mondoy 2002

Rec.

Rec.

Verses (3)

Rec.

Rec.

D.C.

BH 229 E Na Lima Hana_Bssn

BH 229 (LK 236) E Nā Lima Hana

Joe Camacho/David Haas, 1995 arr. R Mondoy 2002

Refrain $\text{♩}=72$



Verses (3)



D.C.



BH 229 (LK 236) E Nā Lima Hana

Joe Camacho/David Haas, 1995 arr. R Mondoy 2002

Refrain $\text{♩} = 72$

B. Cl.

B. Cl.

Verses (3)

B. Cl.

B. Cl.

B. Cl.

D.C.

BH 229 (LK 236) E Nā Lima Hana

Joe Camacho/David Haas, 1995 arr. R Mondoy 2002

Refrain $\text{♩} = 72$

Alto Sax. 

Alto Sax. 

Verses (3)

Alto Sax. 

D.C.

Alto Sax. 

BH 229 (LK 236) E Nā Lima Hana

Refrain $\text{♩} = 72$

Joe Camacho/David Haas, 1995 arr. R Mondoy 2002

Musical score for the Refrain section, measures 1-8. It features three staves: Horn (Hn.), Trumpet (Tpt.), and Trombone (Tbn.). The key signature is two flats (B-flat and E-flat), and the time signature is common time (C). The Horn part has a melodic line with quarter notes. The Trumpet part has a harmonic accompaniment with chords. The Trombone part has a bass line with quarter notes and rests.

9 Verses (3) D.C.

Musical score for the Verses section, measures 9-12. It features three staves: Horn (Hn.), Trumpet (Tpt.), and Trombone (Tbn.). The key signature is two flats (B-flat and E-flat). The time signature changes from common time (C) to 2/4 at measure 10. The Horn part has a melodic line with eighth notes. The Trumpet part has a harmonic accompaniment with chords. The Trombone part has a bass line with eighth notes and rests. A '6' is written above each staff in measure 10, indicating a six-measure rest.

BH 229 (LK 236) E Nā Lima Hana

Refrain ♩=72

Joe Camacho/David Haas, 1995 arr. R Mondoy 2002

Hn.

Hn.

Verses (3)

D.C.

Hn.

BH 229 (LK 236) E Nā Lima Hana

Joe Camacho/David Haas, 1995 arr. R Mondoy 2002

Refrain $\text{♩} = 72$

Musical notation for the first system of the Refrain. It consists of two staves: C Tpt. (top) and Tpt. (bottom). Both staves are in 3/4 time with a key signature of two flats (B-flat and E-flat). The music is written in a homophonic style with chords and single notes.

Musical notation for the second system of the Refrain. It consists of two staves: C Tpt. (top) and Tpt. (bottom). Both staves are in 3/4 time with a key signature of two flats. The music continues with chords and single notes.

Verses (3)

D.C.

Musical notation for the Verses section. It consists of two staves: C Tpt. (top) and Tpt. (bottom). The section begins with a 6-measure rest, indicated by a thick horizontal line with the number '6' above and below it. After the rest, the music changes to 2/4 time with a key signature of two flats. The notation includes eighth and quarter notes, and ends with a double bar line.

BH 229 (LK 236) E Nā Lima Hana

Refrain $\text{♩} = 72$

Joe Camacho/David Haas, 1995 arr. R Mondoy 2002

Tpt.

Tpt.

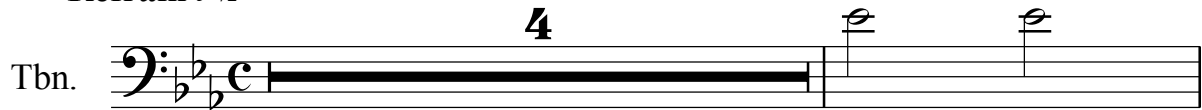
Tpt. **Verses (3)** **6** **D.C.**

BH 229 E Na Lima Hana_Trmbn

BH 229 (LK 236) E Nā Lima Hana

Joe Camacho/David Haas, 1995 arr. R Mondoy 2002

Refrain $\text{♩} = 72$

Tbn. 

Tbn. 

Verses (3)

D.C.

Tbn. 

BH 229 (LK 236) E Nā Lima Hana

Refrain $\text{♩} = 72$

Joe Camacho/David Haas, 1995 arr. R Mondoy 2002

6 **Verses (3)**

13 **D.C.**

BH 229 (LK 236) E Nā Lima Hana

Refrain $\text{♩} = 72$

Joe Camacho/David Haas, 1995 arr. R Mondoy 2002

Vln. I

Vln. 2

5

Vln. I

Vln. 2

9 Verses (3)

4

Vln. I

Vln. 2

15

D.C.

Vln. I

Vln. 2

BH 229 (LK 236) E Nā Lima Hana

Refrain ♩=72

Joe Camacho/David Haas, 1995 arr. R Mondoy 2002

Vln. I

Vln. I

Verses (3)

Vln. I

D.C.

Vln. I

BH 229 (LK 236) E Nā Lima Hana

Refrain ♩=72

Joe Camacho/David Haas, 1995 arr. R Mondoy 2002

Vln. 2

Vln. 2

Verses (3)

Vln. 2

D.C.

Vln. 2

BH 229 (LK 236) E Nā Lima Hana

Joe Camacho/David Haas, 1995 arr. R Mondoy 2002

Refrain $\text{♩} = 72$

Vla.

Vla.

Verses (3)

Vla.

D.C.

Vla.

BH 229 E Na Lima Hana_Vlncl

BH 229 (LK 236) E Nā Lima Hana

Refrain ♩=72

Joe Camacho/David Haas, 1995 arr. R Mondoy 2002



Verses (3)

