

# BH 345 Now All the Vault of Heaven Resounds

Introduction obligato ♩=100 ♩-single pulse

Fl.  
Ob.  
Cl.

4 4 vrs.

Fl.  
Ob.  
Cl.

9

Fl.  
Ob.  
Cl.

13

Fl.  
Ob.  
Cl.

17

Fl.  
Ob.  
Cl.


D.S.


# BH 345 Now All the Vault of Heaven Resounds

LASST UNS ERFREUEN

arr. R Mondoy 2018

Introduction obligato ♩=100 ♩-single pulse

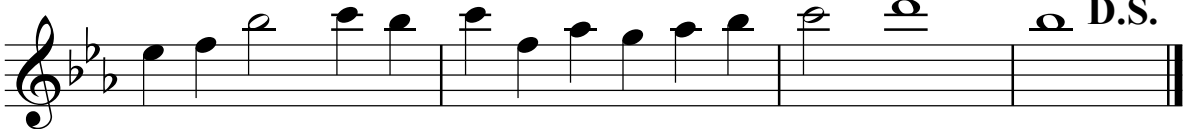
Fl. 

Fl. 

Fl. 

Fl. 

Fl. 

Fl. 

# BH 345 Now All the Vault of Heaven Resounds

LASST UNS ERFREUEN  
arr. R Mondoy 2018

Introduction obligato ♩=100 ♩-single pulse

Ob.

Ob.

Ob.

Ob.

Ob.

Ob.

# BH 345 Now All the Vault of Heaven Resounds

LASST UNS ERFREUEN

arr. R Mondoy 2018

**Introduction obligato** ♩=100 ♩-single pulse

Cl.

Cl. **4 vrs.**

Cl.

Cl.

Cl.

Cl.

Cl. **D.S.**

# BH 345 Now All the Vault of Heaven Resounds

LASST UNS ERFREUEN

arr. R Mondoy 2018

Introduction obligato ♩=100 ♩-single pulse

Hn.

Tpt.

4 4 vrs.

Detailed description: This system contains the first four measures of the introduction. The Horn part (Hn.) is in the treble clef with a key signature of two flats and a 3/2 time signature. It starts with a whole rest in measure 1, followed by quarter notes in measures 2 and 3, and a half note in measure 4. The Trumpet part (Tpt.) is in the treble clef with the same key signature and time signature. It starts with a quarter note in measure 1, followed by quarter notes in measures 2 and 3, and a half note in measure 4. The music concludes with a fermata over the final notes in measure 4.

Hn.

Tpt.

8

Detailed description: This system contains measures 5 through 8. The Horn part (Hn.) has whole rests in measures 5 and 6, followed by quarter notes in measure 7 and a half note in measure 8. The Trumpet part (Tpt.) has quarter notes in measures 5 and 6, followed by quarter notes in measure 7 and a half note in measure 8. The music concludes with a fermata over the final notes in measure 8.

Hn.

Tpt.

11

Detailed description: This system contains measures 9 through 11. The Horn part (Hn.) has a half note in measure 9, followed by whole rests in measures 10 and 11. The Trumpet part (Tpt.) has whole rests in measures 9 and 10, followed by quarter notes in measure 11 and a half note in measure 12. The music concludes with a fermata over the final notes in measure 11.

Hn.

Tpt.

(echo)

14

Detailed description: This system contains measures 12 through 14. The Horn part (Hn.) has whole rests in measures 12 and 13, followed by quarter notes in measure 14 and a half note in measure 15. The Trumpet part (Tpt.) has quarter notes in measures 12 and 13, followed by quarter notes in measure 14 and a half note in measure 15. The music concludes with a fermata over the final notes in measure 14. There are accents (>) over the notes in measure 14.

Hn.

Tpt.

17

Detailed description: This system contains measures 15 through 17. The Horn part (Hn.) has quarter notes in measures 15 and 16, followed by a half note in measure 17. The Trumpet part (Tpt.) has a half note in measure 15, followed by quarter notes in measures 16 and 17. The music concludes with a fermata over the final notes in measure 17. There are accents (>) over the notes in measure 17.

Hn.

Tpt.

D.S.

Detailed description: This system contains measures 18 through 20. The Horn part (Hn.) has quarter notes in measures 18 and 19, followed by a half note in measure 20. The Trumpet part (Tpt.) has quarter notes in measures 18 and 19, followed by a half note in measure 20. The music concludes with a fermata over the final notes in measure 20. There are accents (>) over the notes in measure 19. The instruction 'D.S.' is written above the final measure.

# BH 345 Now All the Vault of Heaven Resounds

LASST UNS ERFREUEN  
arr. R Mondoy 2018

**Introduction obligato** ♩=100 ♩-single pulse

Hn.

**4 vrs.**

Hn.

Hn.

Hn.

*(echo)*

Hn.

Hn.

**D.S.**

Hn.

Detailed description: The score is for a Horn (Hn.) in 3/2 time, key of B-flat major. It begins with an 'Introduction obligato' at a tempo of 100 beats per minute, marked with a single pulse. The first staff shows a melodic line starting on a whole rest, followed by a series of eighth notes and a final half note with a fermata. The second staff is marked '4 vrs.' and contains a series of whole rests followed by a descending eighth-note scale. The third staff continues with whole rests and a final half note with a fermata. The fourth staff features a half note with a fermata, followed by a series of eighth notes with accents, and ends with a half note. The fifth staff has a series of eighth notes and a final half note. The sixth staff continues with eighth notes and a final half note. The seventh staff begins with a half note, followed by eighth notes, and ends with a half note. The eighth staff continues with eighth notes and a final half note. The piece concludes with a double bar line.

# BH 345 Now All the Vault of Heaven Resounds

LASST UNS ERFREUEN

arr. R Mondoy 2018

Introduction obligato ♩=100 ♩-single pulse

Tpt.



Tpt.

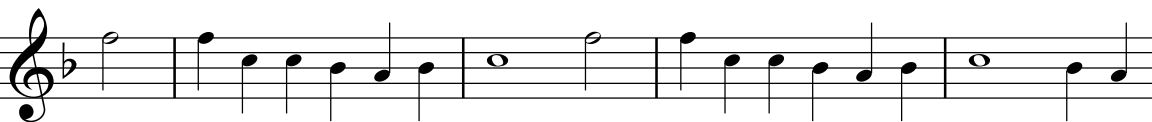
4 vrs.



Tpt.



Tpt.




Tpt.



Tpt.

D.S.



# BH 345 Now All the Vault of Heaven Resounds

LASST UNS ERFREUEN  
arr. R Mondoy 2018

**Introduction obligato** ♩=100 ♩-single pulse

Vln. 1  
Vln. 2  
Vla.  
Vc.

4 **4 vrs.**

Vln. 1  
Vln. 2  
Vla.  
Vc.

8

Vln. 1  
Vln. 2  
Vla.  
Vc.

V.S.



11

Vln. 1  
Vln. 2  
Vla.  
Vc.

This system contains measures 11, 12, and 13. The key signature is three flats (B-flat, E-flat, A-flat). The time signature is 12/8. Measure 11 features a first violin line with sixteenth-note runs and accents, a second violin line with quarter notes and accents, a viola line with quarter notes and accents, and a cello line with quarter notes. Measure 12 continues the patterns with a half note in the first violin. Measure 13 concludes with accents in the first and second violin parts.

14

Vln. 1  
Vln. 2  
Vla.  
Vc.

This system contains measures 14, 15, and 16. Measure 14 shows the first violin with quarter notes and the second violin with a whole rest. Measure 15 features a long slur over the viola line. Measure 16 continues the melodic lines in all parts.

17

Vln. 1  
Vln. 2  
Vla.  
Vc.

D.S.

This system contains measures 17, 18, and 19. Measure 17 has a first violin line with a natural sign on the second measure. Measure 18 continues the melodic flow. Measure 19 ends with a double bar line and a fermata over the final notes in the first violin and cello parts. The instruction "D.S." is placed above the first violin staff.

# BH 345 Now All the Vault of Heaven Resounds

LASST UNS ERFREUEN  
arr. R Mondoy 2018

**Introduction obligato** ♩=100 ♩-single pulse

Vln. 1

Vln. 2

4 4 vrs.

Vln. 1

Vln. 2

Vln. 1

Vln. 2

14

Vln. 1

Vln. 2

17

D.S.

# BH 345 Now All the Vault of Heaven Resounds

Introduction obligato ♩=100 ♩-single pulse

LASST UNS ERFREUEN  
arr. R Mondoy 2018

Vln. 1

Vln. 1

Vln. 1

4 vrs.

Vln. 1

Vln. 1

Vln. 1

Vln. 1

D.S.

# BH 345 Now All the Vault of Heaven Resounds

Introduction obligato ♩=100 ♩-single pulse

LASST UNS ERFREUEN  
arr. R Mondoy 2018

Vln. 2

Vln. 2

Vln. 2

4 vrs.

Vln. 2

Vln. 2

Vln. 2

Vln. 2

D.S.

# BH 345 Now All the Vault of Heaven Resounds

LASST UNS ERFREUEN

arr. R Mondoy 2018

Introduction obligato ♩=100 ♩-single pulse

Vla.

Vla.

Vla.

Vla.

Vla.

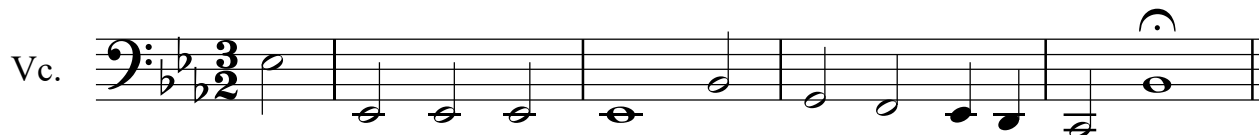
Vla.

Vla.

# BH 345 Now All the Vault of Heaven Resounds

LASST UNS ERFREUEN  
arr. R Mondoy 2018

Introduction obligato ♩=100 ♩-single pulse



**§** 4 vrs.

