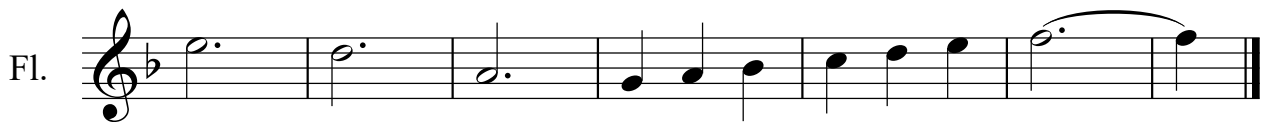
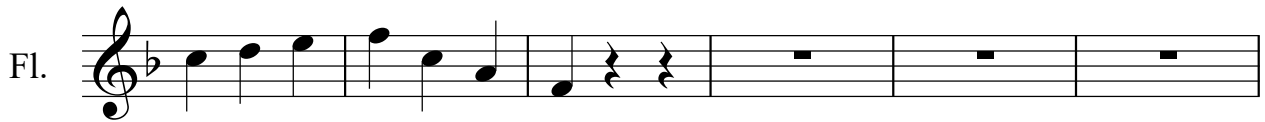


434. The Summons

KELVINGROVE, arr. R Mondoy 2024

(5 vrs) ♩=121




434. The Summons


(5 vrs) ♩=121

KELVINGROVE, arr. R Mondoy 2024

Ob.  Musical staff for Ob. 1, treble clef, 3/4 time signature, key signature of one flat. The melody consists of quarter notes: G4, A4, Bb4, C5, Bb4, A4, G4, F4, E4, D4.

Ob.  Musical staff for Ob. 2, treble clef, 3/4 time signature, key signature of one flat. The melody consists of quarter notes: G4, A4, Bb4, C5, Bb4, A4, G4, F4, E4, D4.

Ob.  Musical staff for Ob. 3, treble clef, 3/4 time signature, key signature of one flat. The melody consists of quarter notes: G4, A4, Bb4, C5, Bb4, A4, G4, F4, E4, D4.

Ob.  Musical staff for Ob. 4, treble clef, 3/4 time signature, key signature of one flat. The melody consists of quarter notes: G4, A4, Bb4, C5, Bb4, A4, G4, F4, E4, D4.

Ob.  Musical staff for Ob. 5, treble clef, 3/4 time signature, key signature of one flat. The melody consists of quarter notes: G4, A4, Bb4, C5, Bb4, A4, G4, F4, E4, D4.

434. The Summons

KELVINGROVE, arr. R Mondoy 2024

(5 vrs) ♩=121

Cl.

Cl.

Cl.

Cl.

Cl.

434. The Summons

KELVINGROVE, arr. R Mondoy 2024

(5 vrs) ♩=121

B. Cl. 

B. Cl. 

B. Cl. 

B. Cl. 

B. Cl. 

434. The Summons

KELVINGROVE, arr. R Mondoy 2024

(5 vrs) ♩=121

Alto Sax.

Alto Sax.

Alto Sax.

Alto Sax.

Alto Sax.

Alto Sax.

434. The Summons

(5 vrs) ♩=121

KELVINGROVE, arr. R Mondoy 2024

Hn.

Tpt.

6

Hn.

Tpt.

13

Hn.

Tpt.

24

Hn.

Tpt.

28

Hn.

Tpt.


434. The Summons


(5 vrs) ♩=121

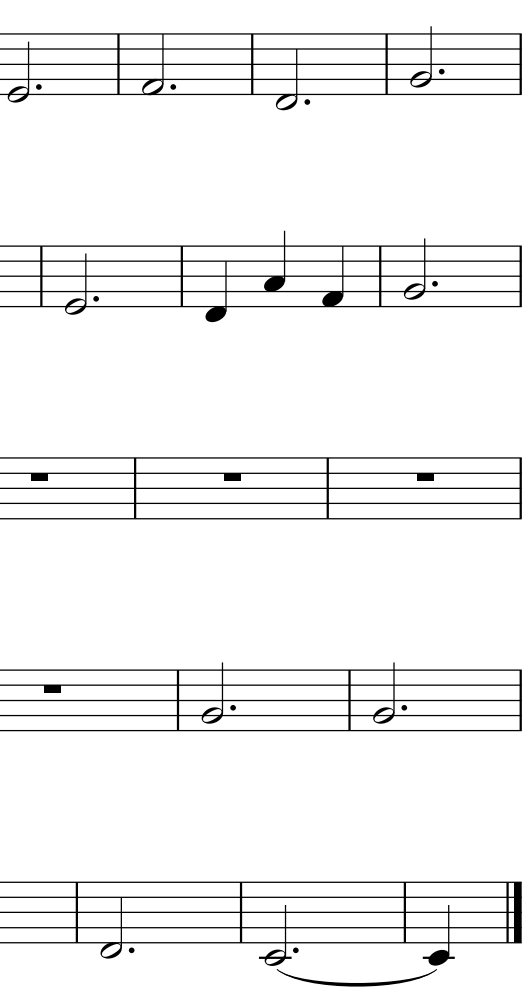
KELVINGROVE, arr. R Mondoy 2024

Hn.  Musical staff for Horn 1 in 3/4 time. The staff contains a treble clef, a key signature of one flat, and a 3/4 time signature. The music begins with two rests, followed by a sequence of dotted quarter notes: G4, F4, E4, D4, C4, B3, A3, G3.

Hn.  Musical staff for Horn 2 in 3/4 time. The staff contains a treble clef, a key signature of one flat, and a 3/4 time signature. The music begins with a quarter note G4, followed by quarter notes F4, E4, D4, C4, B3, A3, G3, and a final dotted quarter note G3.

Hn.  Musical staff for Horn 3 in 3/4 time. The staff contains a treble clef, a key signature of one flat, and a 3/4 time signature. The music begins with a dotted quarter note G4, followed by a quarter note F4, then two rests. The remainder of the staff contains four whole rests.


Hn.  Musical staff for Horn 4 in 3/4 time. The staff contains a treble clef, a key signature of one flat, and a 3/4 time signature. The staff contains four whole rests, followed by a dotted quarter note G3 and a final dotted quarter note G3.

Hn.  Musical staff for Horn 5 in 3/4 time. The staff contains a treble clef, a key signature of one flat, and a 3/4 time signature. The music begins with a dotted quarter note G3, followed by dotted quarter notes F3, E3, D3, C3, B2, A2, and a final dotted quarter note G2.

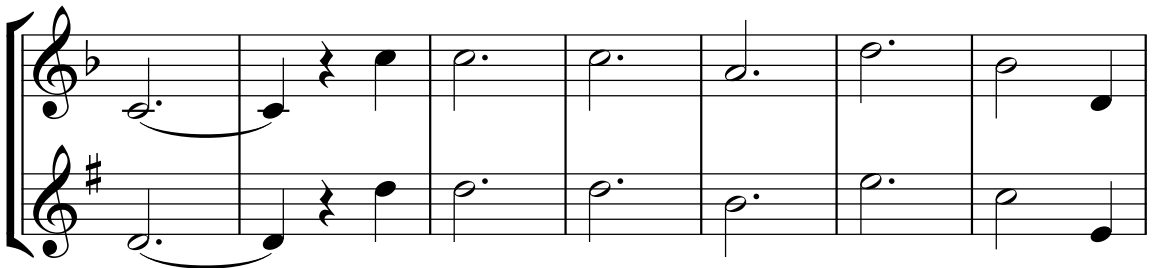
434. The Summons

KELVINGROVE, arr. R Mondoy 2024

(5 vrs) ♩=121

C Tpt.  Tpt.

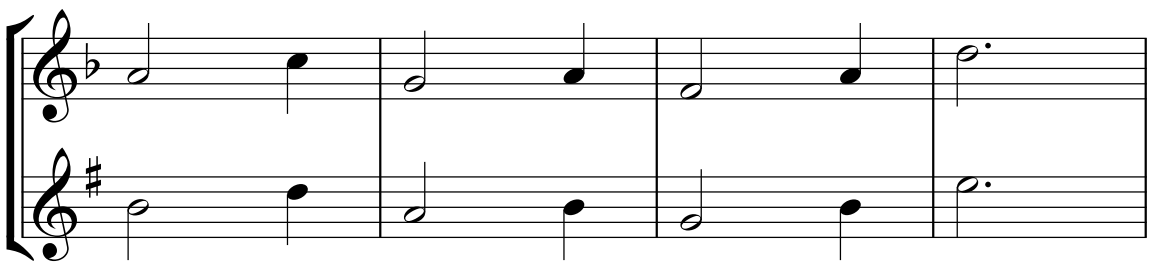
Musical notation for the first system, measures 1-8. The C Tpt. staff is in G major (one flat) and 3/4 time. The Tpt. staff is in D major (two sharps) and 3/4 time. The music consists of eighth and quarter notes.

C Tpt.  Tpt.

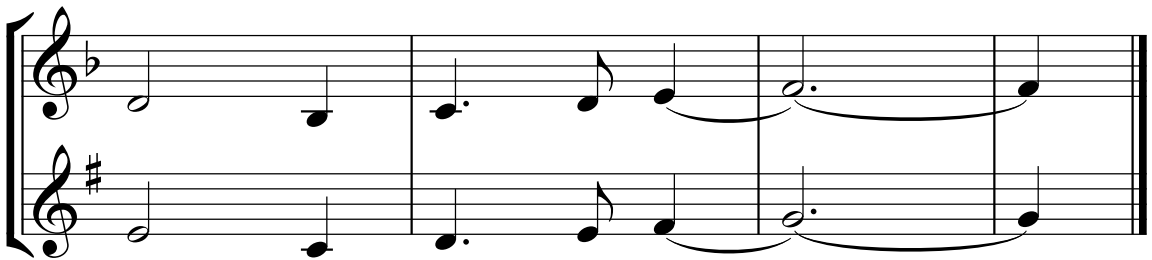
Musical notation for the second system, measures 9-16. The C Tpt. staff features a melodic line with a slur over measures 10-11. The Tpt. staff provides a harmonic accompaniment.

C Tpt.  Tpt.

Musical notation for the third system, measures 17-24. Measures 19-20 contain a seven-measure rest for both parts, indicated by a horizontal bar with the number '7' above and below it.

C Tpt.  Tpt.

Musical notation for the fourth system, measures 25-32. The C Tpt. staff has a melodic line, and the Tpt. staff has a harmonic accompaniment.

C Tpt.  Tpt.

Musical notation for the fifth system, measures 33-40. The C Tpt. staff has a melodic line, and the Tpt. staff has a harmonic accompaniment. The system ends with a double bar line.

434. The Summons

KELVINGROVE, arr. R Mondoy 2024

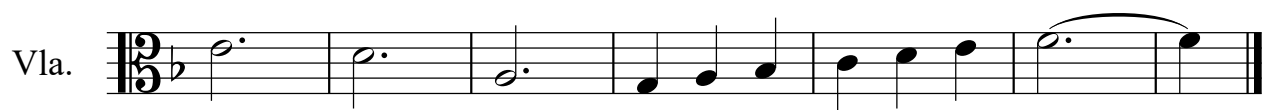
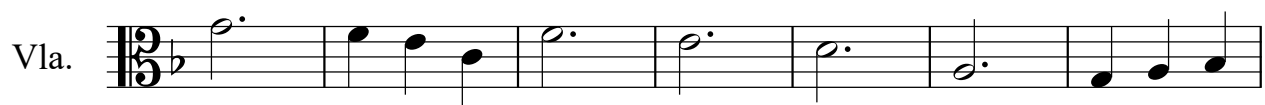
(5 vrs) ♩=121

The image displays six staves of violin music, each labeled 'Vln.' on the left. The music is written in treble clef with a key signature of one flat (Bb) and a 3/4 time signature. The tempo is marked as quarter note = 121 (♩=121). The first staff begins with a treble clef, a key signature of one flat, and a 3/4 time signature. The music consists of six staves of notation, each containing a single line of music. The notation includes various note values such as quarter notes, eighth notes, and dotted notes, along with rests and a final double bar line at the end of the sixth staff.

434. The Summons

(5 vrs) ♩=121

KELVINGROVE, arr. R Mondoy 2024




434. The Summons

(5 vrs) ♩=121

KELVINGROVE, arr. R Mondoy 2024

Vc. 

Vc. 

Vc. 

Vc. 