

# BH Entrance Antiphon "Search My Heart"

Stately  $\text{♩} = 100$  R Mondoy, 2021

Fl.  
Ob.  
Cl.

4  $\text{♩}$  D.S.  
TAG if needed

# BH Entrance Antiphon "Search My Heart"

**Stately** ♩=100

R Mondoy, 2021

Fl.

Fl.

D.S.  
TAG if needed

# BH Entrance Antiphon "Search My Heart"

Stately  $\text{♩} = 100$

R Mondoy, 2021

Ob. 

Ob. 

D.S.  
TAG if needed

# BH Entrance Antiphon "Search My Heart"

**Stately** ♩=100 R Mondoy, 2021

Cl. 

Cl.  D.S.  
TAG if needed

# BH Entrance Antiphon "Search My Heart"

Stately  $\text{♩} = 100$

R Mondoy, 2021

Musical notation for Horn (Hn.) and Trumpet (Tpt.) parts, measures 1-4. The key signature is two sharps (F# and C#) and the time signature is 4/4. The tempo is marked "Stately" with a quarter note equal to 100 beats per minute. The Horn part starts with a half note G4, followed by a half note A4, and then a whole note B4. The Trumpet part starts with a half note G3, followed by a half note A3, and then a whole note B3.

$\$$

D.S.  
TAG if needed

Musical notation for Horn (Hn.) and Trumpet (Tpt.) parts, measures 5-8. The key signature is two sharps (F# and C#) and the time signature is 4/4. The Horn part starts with a half note G4, followed by a half note A4, and then a whole note B4. The Trumpet part starts with a half note G3, followed by a half note A3, and then a whole note B3. The notation includes a repeat sign at the end of each part.

# BH Entrance Antiphon "Search My Heart"

**Stately** ♩=100

R Mondoy, 2021

Hn.

Hn. 

D.S.  
TAG if needed

# BH Entrance Antiphon "Search My Heart"

**Stately** ♩=100

R Mondoy, 2021

Tpt. 

§

D.S.

TAG if needed

Tpt. 

# BH Entrance Antiphon "Search My Heart"

Stately  $\text{♩} = 100$

R Mondoy, 2021

Musical score for the first system, measures 1-3. The score is for three staves: Violins (Vlns), Viola (Vla.), and Violoncello (Vc.). The key signature is one sharp (F#) and the time signature is 4/4. The tempo is marked 'Stately' with a quarter note equal to 100 beats per minute. The music begins with a half note G4 in the violin part, followed by a half note A4 in the viola part, and a half note G3 in the cello part. The second measure continues with a half note B4 in the violin, a half note G4 in the viola, and a half note F#3 in the cello. The third measure features a half note C5 in the violin, a half note A4 in the viola, and a half note G3 in the cello.

§

D.S.  
TAG if needed

Musical score for the second system, measures 4-6. The score is for three staves: Violins (Vlns), Viola (Vla.), and Violoncello (Vc.). The key signature is one sharp (F#) and the time signature is 4/4. The music begins with a half note G4 in the violin part, followed by a half note A4 in the viola part, and a half note G3 in the cello part. The second measure continues with a half note B4 in the violin, a half note G4 in the viola, and a half note F#3 in the cello. The third measure features a half note C5 in the violin, a half note A4 in the viola, and a half note G3 in the cello. The system ends with a double bar line and repeat dots in all three staves.



# BH Entrance Antiphon "Search My Heart"

**Stately** ♩=100

R Mondoy, 2021

Vlns



D.S.  
TAG if needed

Vlns



# BH Entrance Antiphon "Search My Heart"

R Mondoy, 2021

**Stately** ♩=100

Vlins

Vla.

4

Vlins

Vla.

D.S.  
TAG if needed

# BH Entrance Antiphon "Search My Heart"

Stately ♩=100

R Mondoy, 2021

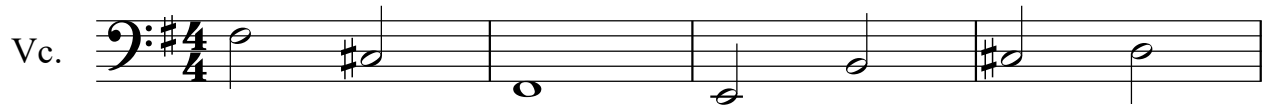
Vla.

Vla.

# BH Entrance Antiphon "Search My Heart"

Stately  $\text{♩} = 100$

R Mondoy, 2021



D.S.  
TAG if needed

