

Moloka'i Nui A Hina

G G7 C G
 Ua nani nā hono a Pi'ilani
 D D7 G
 I ke kū kilakila i ka 'ōpua
 G G7 C Cm
 'O ku'u pua kukui aia i Lanikāula
 G D7 G
 'O ka hene wai 'olu lana mālie

Great Moloka'i, Child of Hina

Beautiful are the bays of chief Pi'ilani
 Flanked by the majestic cloud banks
 My kukui blossom, there at Lanikāula
 With the teasing comfort of the calm waters

HUI
 G G7
 Ua like nō a like lā
 C Am
 Me ku'u one hānau
 D D7
 Ke po'okela i ka piko o nā kuahiwi
 G G7
 Me Moloka'i nui a Hina
 C Cm
 'Āina i ka wehiwehi
 G D7 G
 E ho'i nō au e pili

So alike, so very like
 The land of my birth
 The finest at the heart of mountains
 Like Great Moloka'i, child of Hina
 Land of beauty and verdure
 I shall return to stay

G G7 C Am
 E ka makani ē, e pā mai me ke aheahe
 D D7 G
 'Auhea ku'u pua kalaunu

Oh breezes, blow gently
 Where indeed is my crownflower

G G7 C G
 Ki'eki'e Hālawa i ke alo o nā pali
 D D7 G
 'O ka heke nō ia i ka'u 'ike
 G G7 C Cm
 Lupalupa lau lipo i ke oho o ka palai
 G D7 G
 Ma ku'u poli mai 'oe e ho'oheno nei

Hālawa rises lofty amid the cliffs
 It is the finest I've witnessed
 Dark and luxurious with lush fern
 You are held precious in my heart

(Translation: Puakea Nogelmeier)

The classic "Moloka'i Nui A Hina" was early on attributed to Matthew H. Kāne, and was part of Hālawa School's song repertoire from its prize-winning choral program. Hālawa School's excellent music program was known kingdom-wide since the school's founding in 1886. The appropriation of the Civil War tune "Tenting Tonight" is telling of the time frame for its creation, and Dorothy Kahananui (1919-1996) provided an excellent analysis of the song in *George Kanahale's Hawaiian Music and Musicians*.⁷ The expression "Nā hono a Pi'ilani" is one of the important historical epithets for Moloka'i; Pi'ilani was a great 16th century chief who ruled Maui, Moloka'i and Lāna'i.

Moloka'i Nui A Hina

March, swing eighths

♩ = 144

'Ōlelo: Matthew H. Kāne (1872-1920), ca.1906. Leo: Tenting Tonight

Transcribed after common practice, Moloka'i community



1. U - a na-ni nā ho-no a Pi - 'i - la-ni I ke kū ki - la-
2. Ki - 'e - ki - 'e Hā - la-wa i ke a - lo i nā pa-li 'Oka he - ke nō



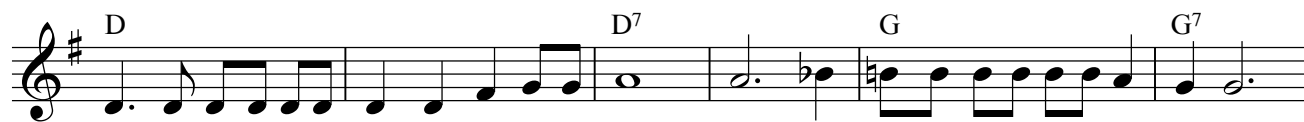
ki - la i ka 'ō - pu - a 'O ku - 'u pu-a ku - ku - i a -
ia i ka - 'u i - ke Lu-pa- lu - pa la - u li - po i ke



ia i La-ni-kā - u-la 'Oka he-ne wai 'o-lu la-na mā - li -
o-ho o ka pa-la-i Ma ku-'u po-li mai 'oe e ho-'o-he-no ne -



e U - a li - ke nō a li - ke lā me ku - 'u o-ne hā - nau Ke
i



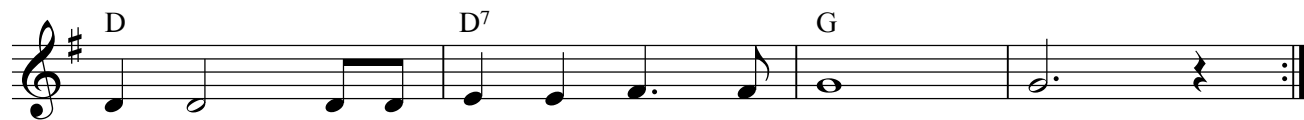
po - 'o-ke-la i ka pi-ko nā ku-a - hi - wi Me Mo-lo-ka-'i nu-i a Hi-na



'Āi-na i ka we-hi - we-hi E ho-'i nō au e pi - li



E ka ma-ka-ni ē, e pā mai me ke a - he - a - he 'Au -



he - a ku - 'u pu - a ka - la - u - nu

'Ōlelo: Matthew H. Kāne (1872-1920), ca. 1906

Leo: "Tenting Tonight", an American Civil War tune.

All typesets ©2010 Mondoy Music 1555 Pōhaku St. B-104 Honolulu HI 96817 (808) 845-8405

www.mondoymusic.com Please contact before photocopying. Mahalo.