

Ua Nani Moloka'i

Ua nani Moloka'i Nui a Hina
'O ka heke nō ia a'o nā 'ailana

Beautiful Is Moloka'i

Beautiful is Great Moloka'i of Hina,
It is indeed, the best of the islands

Uluwehiwehi a'o Lanikāula
Ka ulu kukui e kaulana nei

Verdant is Lanikāula,
The famous grove of kukui trees

He wai 'au'au a'o Moa'ula,
E ho'opulu i ka 'ili o ka malihini

The bathing waters of Moa'ula,
That dampens the skin of the newcomer

Ho'ale'ale i ka 'ehu o ke kai
I ke kū kilakila a'o Hā'upu

Making waves in the spray of the sea
As Hā'upu stands majestically

Ha'ina 'ia mai ana ka puana
Sweet lei kukui ka heke o Moloka'i

Told is the refrain
The sweet kukui lei is the best of Moloka'i

(Translated by Pueo Pata)



View from Hā'upu, with Kapailoa cliffs overlooking Hā'upu Bay; beyond it are the elongate Kūka'iwa'a Point, tall Huelo Rock, Leinaopapio Point, 'Okala Island and Kalaupapa; the farthest right island is Mōkapu (mahalo to Guy Hughes & Panoramio.com)

Given the time gap between the inaugural recordings of "Hōnaunau Pāka" and "Ua Nani Moloka'i," it seems the latter was modeled after the former, a tribute to the quality of the original tune and text by the composer, Rose Alai Akona Peters (1892-1976).¹⁰ She created "Hōnaunau Pāka" sometime in the late 1940s; her family were the original caretakers of the Hōnaunau historic site until the State took over. It was probably sometime in the 1950s that someone cleverly re-cast the words and tune as a Moloka'i honorific.



Hā'upu. Pelekunu valley and bay are in the upper left. (mahalo to Steve Eminger & Panoramio.com)

Hā'upu is a north shore promontory famous in Moloka'i legends.¹¹ You can best view the area from air or by sea, but the boat ride does get you wet. (see vrs. 4).

When the Hawaii Superferry hydrofoil operated in 2007-2009 between O'ahu and Moloka'i, many locals finally got to see for themselves the breath-taking Moloka'i north shore and remember the views as one of life's extraordinary experiences.

'Ōlelo: Anonymous, adapted in 1950s after "Hōnaunau Pāka". Leo; Rose Alai Akona Peters (1892-1976), 1940s. This typeset proffered for educational purposes only. All typesets ©2010 Mondoy Music 1555 Pōhaku St. Apt. B-104 Honolulu HI 96817 (808) 845-8405 www.mondoymusic.com Please contact before photocopying. Mahalo!

Ua Nani Moloka'i

‘Ōlelo: Anonymously adapted from "Hōnaunau Pāka"; 1950s?

Leo: "Hōnaunau Pāka", Rose Alai Akona Peters (1892-1976) , late 1940s?
transcribed after Elaine Ako Spencer "Hōnaunau Pāka", 1976

Chalang-a-lang, "old style" swing eighths

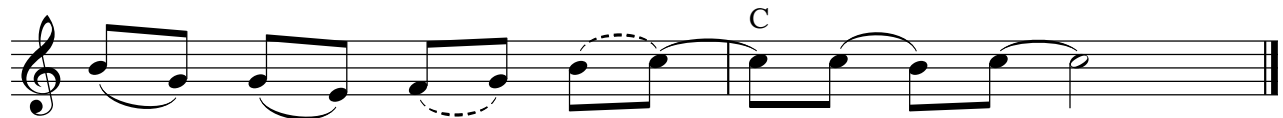
♩=128-132



1. U - a na - ni Mo - lo - ka - 'i Nu - i a
 2. U - lu - we - hi - we - hi a - 'o La - ni - kā -
 3. He wa - i 'a - u - 'a - u a - 'o Mo - a -
 4. Ho - 'a - le - 'a - le i ka 'e - hu o ke
 5. Ha - 'i - na 'i - a ma - i a - na ka pu -



- Hi - 3 na 'O ka he - ke nō
 u - la Ka u - lu ku -
 'u - la E ho - 'o - pu - lu i ka
 ka - i I ke kū ki - la -
 a - na Sweet lei ku - ku - i ka



- i - a a - 'o nā 'ai - la - na
 ku - i e kau - la - na ne - i
 'i - li o ka ma - li - hi - ni
 ki - la a - 'o Hā - 'u - pu
 he - ke o Mo - lo - ka - 'i

‘Ōlelo: Anonymous, adapted in 1950s after "Hōnaunau Pāka". Leo; Rose Alai Akona Peters (1892-1976), 1940s

This typeset proffered for educational purposes only.

All typesets ©2010 Mondoy Music 1555 Pōhaku St B-104 Honolulu HI 96817 (808) 845-8405 www.mondoymusic.com

Please contact before photocopying. Mahalo!