

EfSax Psalm 89 "Forever I Will Sing the Goodness"

In two; much vigor
Antiphon

Mondoy, '83/ arr '06

Lead-In

"For- ev- er...

v1: "strong"
v2: "savior"

Verse 1

8 DC.

Verse 2

molto *ff* him *mf* *mp*

cresc. DC.

are my Father...

Flutes Psalm 89 "Forever I Will Sing the Goodness"

In two; much vigor
Antiphon

Mondoy, '83/ arr '06

Lead-In
v1: "strong"
v2: "savior"

"For- ev- er..."

The Antiphon section consists of two staves. The first staff is a treble clef with a key signature of three sharps (F#, C#, G#) and a 6/8 time signature. It contains a lead-in melody of quarter notes: F#4, C#5, G#4, F#4, G#4, C#5, G#4, F#4. The second staff continues the melody with eighth notes and includes trills (tr) over the notes for "For-" and "ev-".

Verse 1

Verse 1 consists of two staves of music. The first staff is a treble clef with a key signature of three sharps and a 6/8 time signature, featuring a melody of eighth notes: F#4, G#4, A5, G#4, F#4, G#4, A5, G#4. The second staff continues the melody with eighth notes and includes a double bar line with a repeat sign and the marking "D.C." at the end.

Verse 2

Verse 2 consists of three staves of music. The first staff is a treble clef with a key signature of three sharps and a 6/8 time signature, featuring a melody of quarter notes: F#4, G#4, A5, G#4, F#4, G#4, A5, G#4. The second staff continues the melody with eighth notes and includes dynamic markings: *mf*, *mp*, *molto*, *ff*, and trills (tr). The third staff continues the melody with eighth notes and includes a *cresc.* marking and a double bar line with a repeat sign and the marking "D.C." at the end.

Oboe Psalm 89 "Forever I Will Sing the Goodness"

In two; much vigor
Antiphon

Mondoy, '83/ arr '06

Lead-In
v1: "strong"
v2: "savior"

"For- ev- er...

Verse 1

DC.

Verse 2

mf *molto* *mp* *ff* him

are my Father... *cresc.*

DC.

Recorders Psalm 89 "Forever I Will Sing the Goodness"

In two; much vigor
Antiphon

Mondoy, '83/ arr '06

Lead-In
v1: "strong"
v2: "savior"

"For- ev- er..."

The Antiphon section consists of two staves. The first staff is a vocal line in treble clef with a key signature of two sharps (F# and C#) and a 6/8 time signature. It begins with a 'Lead-In' section of four measures, followed by the lyrics 'For- ev- er...' over the next four measures. The second staff is an instrumental accompaniment for the recorder, featuring a melodic line with eighth and sixteenth notes, and some chromaticism.

Verse 1

DC.

Verse 1 consists of two staves of music. The first staff is a vocal line in treble clef with a key signature of two sharps and a 6/8 time signature, containing four measures of music. The second staff is an instrumental accompaniment for the recorder, also in treble clef with a key signature of two sharps and a 6/8 time signature, containing four measures of music. The section ends with a double bar line and the marking 'DC.' (Da Capo).

Verse 2

molto *ff* him

mf *mp*

cresc.

are my Father... DC.

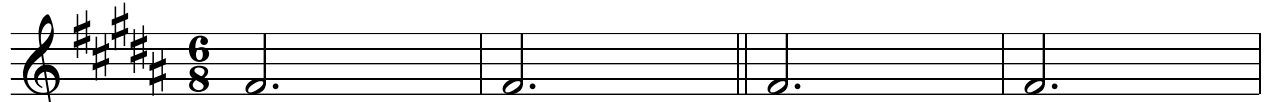
Verse 2 consists of three staves of music. The first staff is a vocal line in treble clef with a key signature of two sharps and a 6/8 time signature, containing five measures of music. The second staff is an instrumental accompaniment for the recorder, also in treble clef with a key signature of two sharps and a 6/8 time signature, containing five measures of music. The third staff is another instrumental accompaniment for the recorder, also in treble clef with a key signature of two sharps and a 6/8 time signature, containing five measures of music. The section ends with a double bar line and the marking 'DC.' (Da Capo).

Trumpets Psalm 89 "Forever I Will Sing the Goodness"

Mondoy, '83/ arr '06

In two; much vigor

Antiphon



Lead-In >

v1: "strong"

v2: "savior"

"For-

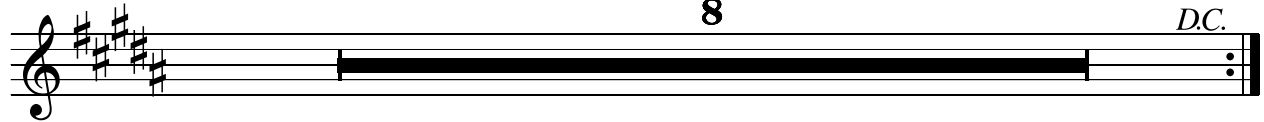
ev-

er...



hemiola

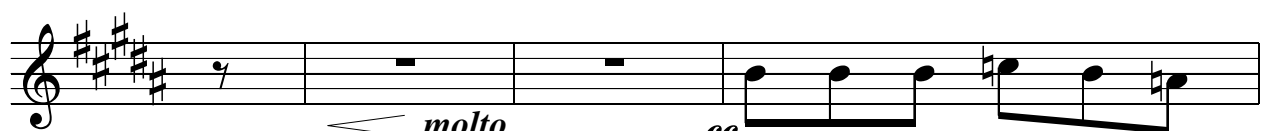
Verse 1



8

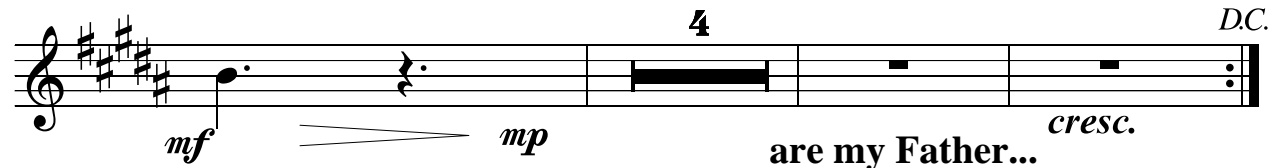
D.C.

Verse 2



molto

ff him



mf

mp

are my Father...

cresc.

4

D.C.

Violins Psalm 89 "Forever I Will Sing the Goodness"

Mondoy, '83/ arr '06

In two; much vigor

Antiphon

Lead-In
v1: "strong"
v2: "savior"

"For- ev- er..."

Detailed description: This section contains two staves of music. The top staff is a vocal line starting with a whole note G4, followed by a double bar line, then quarter notes A4, B4, and C5. The bottom staff is a violin line with a treble clef, key signature of two sharps (F# and C#), and a 6/8 time signature. It begins with a whole note G4, followed by quarter notes A4, B4, and C5, then eighth notes G4-A4, B4-C5, and eighth notes G4-A4, B4-C5. The section ends with a double bar line.

Verse 1

Detailed description: This section consists of two staves of music. Both staves feature a rhythmic pattern of eighth notes in a 6/8 time signature. The top staff has a treble clef and a key signature of two sharps. The bottom staff also has a treble clef and a key signature of two sharps. The pattern consists of eighth notes G4-A4, B4-C5, and eighth notes G4-A4, B4-C5. The section ends with a double bar line and the marking 'D.C.'.

Verse 2

molto *ff* him *mf* *mp* *cresc.* are my Father... *D.C.*

Detailed description: This section consists of three staves of music. The top staff has a treble clef and a key signature of two sharps, starting with a whole rest followed by a half note G4, then quarter notes A4, B4, and C5. Dynamic markings include *molto* and *ff*. The middle staff has a treble clef and a key signature of two sharps, starting with a half note G4, then quarter notes A4, B4, and C5. Dynamic markings include *mf* and *mp*. The bottom staff has a treble clef and a key signature of two sharps, starting with a half note G4, then quarter notes A4, B4, and C5. Dynamic markings include *cresc.* and *D.C.*. The lyrics 'are my Father...' are placed below the bottom staff.