

BH 129 Behold the Lamb

Willet, arr. R Mondoy 2002

Verses $\text{♩} = 100$

Fl.
Ob.
Cl.
Bsn.

Detailed description: This system contains measures 1 through 6 of the 'Verses' section. The music is in 4/4 time with a tempo of quarter note = 100. The key signature has one sharp (F#). The Flute part features a melodic line with eighth-note patterns and dotted rhythms. The Oboe part follows a similar pattern. The Clarinet part has a more active line with eighth-note runs. The Bassoon part provides a steady accompaniment with half notes and quarter notes.

7 § Refrain

Fl.
Ob.
Cl.
Bsn.

Detailed description: This system contains measures 7 through 14, marked as the 'Refrain' with a double bar line. The key signature changes to two sharps (F# and C#). The Flute part has a more complex melodic line with sixteenth-note runs. The Oboe part has a steady eighth-note accompaniment. The Clarinet part has a melodic line with eighth notes. The Bassoon part continues with a steady accompaniment.

15

Fl.
Ob.
Cl.
Bsn.

Detailed description: This system contains measures 15 through 18, continuing the 'Refrain' section. The instrumentation and key signature remain the same as in the previous system. The Flute part continues with its melodic line, while the other instruments provide accompaniment.

BH 129 Behold the Lamb

Willet, arr. R Mondoy 2002

Intro, if used

O.C.P.

Verses ♩=100

O.C.P.

Refrain

O.C.P.

O.C.P.

4 verses **D.C.** **Final**

O.C.P.

O.C.P.

21

Fl.
Ob.
Cl.
Bsn.

This system contains measures 21 through 25. The Flute part begins with a melodic line starting on a whole note G4, followed by eighth notes. The Oboe, Clarinet, and Bassoon parts provide harmonic support with various note values and rests.

26

4 verses D.C. Final

Fl.
Ob.
Cl.
Bsn.

This system contains measures 26 and 27. A bracket above the staffs indicates a first ending for measures 26-27, labeled "4 verses". A double bar line with repeat dots is labeled "D.C." (Da Capo). A second bracket above the staffs indicates a second ending for measures 26-27, labeled "Final".

28

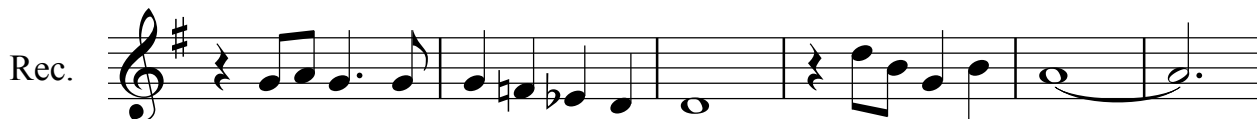
Fl.
Ob.
Cl.
Bsn.

This system contains measures 28 through 31. The music continues with various melodic and harmonic lines for all instruments, including some rests and longer note values.

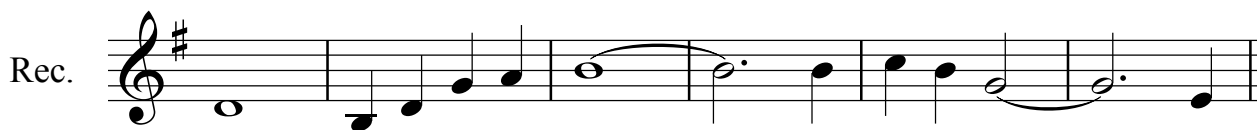
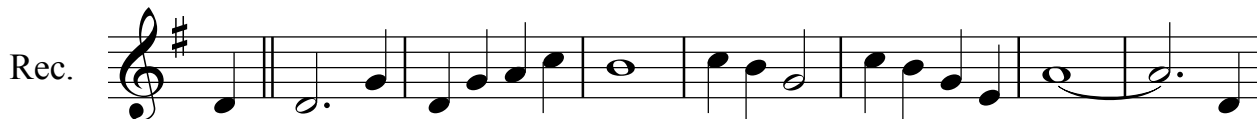
BH 129 Behold the Lamb

Willet, arr. R Mondoy 2002

Verses ♩=100

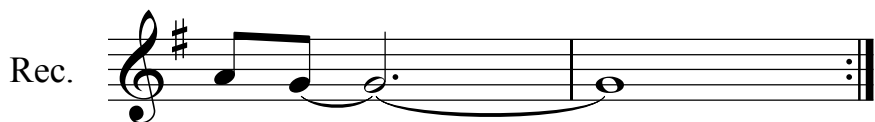


§ Refrain



4 verses

D.C.



Final

3



BH 129 Behold the Lamb

Willet, arr. R Mondoy 2002

Verses ♩=100

Fl.

Fl.

Refrain

Fl.

Fl.

4 verses **D.C.**

Fl.

Final

Fl.

BH 129 Behold the Lamb

Willet, arr. R Mondoy 2002

Verses ♩=100

Ob.

§ Refrain

Ob.

Ob.

Ob.

BH 129 Behold the Lamb

Willet, arr. R Mondoy 2002

Verses ♩=100

Cl.

Cl.

§ Refrain

Cl.

Cl.

Cl.

4 verses D.C. Final

Cl.

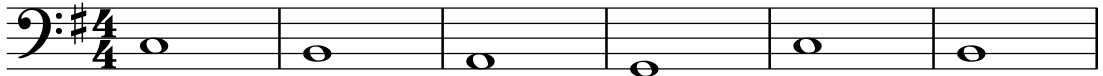
Cl.

BH 129 Behold The Lamb_Bssn

BH 129 Behold the Lamb

Verses ♩=100

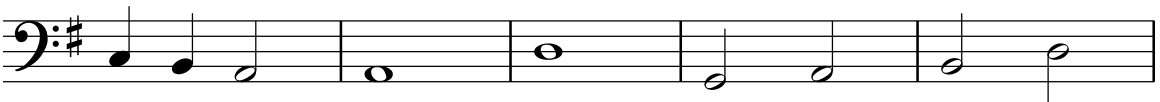
Willet, arr. R Mondoy 2002

Bsn.  Bass clef, key signature of one sharp (F#), 4/4 time signature. The staff contains six measures of music, each with a whole note: G2, G2, G2, G2, G2, G2.

Bsn.  Bass clef, key signature of one sharp (F#). The staff contains six measures of music: G2 (half note), G2 (quarter note), G2 (quarter note), G2 (quarter note), G2 (quarter note), G2 (quarter note).

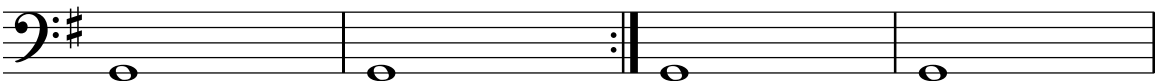
§ Refrain

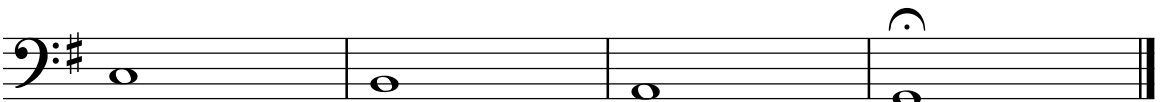
Bsn.  Bass clef, key signature of one sharp (F#). The staff contains six measures of music: G2 (quarter note), G2 (quarter note), G2 (quarter note), G2 (quarter note), G2 (quarter note), G2 (quarter note).

Bsn.  Bass clef, key signature of one sharp (F#). The staff contains six measures of music: G2 (quarter note), G2 (quarter note), G2 (quarter note), G2 (quarter note), G2 (quarter note), G2 (quarter note).

Bsn.  Bass clef, key signature of one sharp (F#). The staff contains six measures of music: G2 (quarter note), G2 (quarter note), G2 (quarter note), G2 (quarter note), G2 (quarter note), G2 (quarter note).

4 verses D.C. Final

Bsn.  Bass clef, key signature of one sharp (F#). The staff contains six measures of music: G2 (quarter note), G2 (quarter note), G2 (quarter note), G2 (quarter note), G2 (quarter note), G2 (quarter note).

Bsn.  Bass clef, key signature of one sharp (F#). The staff contains six measures of music: G2 (quarter note), G2 (quarter note), G2 (quarter note), G2 (quarter note), G2 (quarter note), G2 (quarter note).

BH 129 Behold the Lamb

Willet, arr. R Mondoy 2002

Verses ♩=100

Hn.
Tpt.
Tbn.

9 **§ Refrain**

Hn.
Tpt.
Tbn.

17

Hn.
Tpt.
Tbn.

BH 129 Behold The Lamb_HrnTrpsTrbn

2

22 4 verses D.C.

Hn.
Tpt.
Tbn.

26 Final

Hn.
Tpt.
Tbn.

BH 129 Behold the Lamb

Verses ♩=100

Willet, arr. R Mondoy 2002

11

Hn.

§ Refrain

Hn.

Hn.

Hn.

Hn.

BH 129 Behold the Lamb

Verses ♩=100

Willet, arr. R Mondoy 2002

Tpt.

Tpt.

§ Refrain

Tpt.

Tpt.

Tpt.

Tpt.

Tpt.

BH 129 Behold the Lamb

Verses ♩=100

Willet, arr. R Mondoy 2002

Tbn.

Tbn.

§ Refrain

Tbn.

Tbn.

Tbn.

4 verses D.C. Final

Tbn.

Tbn.

BH 129 Behold the Lamb

Verses $\text{♩} = 100$

Willet, arr. R Mondoy 2002

Musical score for the first system (measures 1-7) of 'Behold the Lamb'. The score is for four instruments: Violin I (Vln. I), Violin II (Vln. 2), Viola (Vla.), and Violoncello (Vc.). The key signature is one sharp (F#) and the time signature is 4/4. The tempo is marked as $\text{♩} = 100$. The music begins with a whole rest in the first measure, followed by a series of notes and rests across the seven measures.

Musical score for the second system (measures 8-15) of 'Behold the Lamb', marked as a Refrain. The score is for four instruments: Violin I (Vln. I), Violin II (Vln. 2), Viola (Vla.), and Violoncello (Vc.). The key signature is one sharp (F#) and the time signature is 4/4. The music begins with a whole rest in the first measure, followed by a series of notes and rests across the eight measures.

Musical score for the third system (measures 16-23) of 'Behold the Lamb'. The score is for four instruments: Violin I (Vln. I), Violin II (Vln. 2), Viola (Vla.), and Violoncello (Vc.). The key signature is one sharp (F#) and the time signature is 4/4. The music begins with a whole rest in the first measure, followed by a series of notes and rests across the eight measures.

23 4 verses D.C.



Vln. I

Vln. 2

Vla.

Vc.

26 Final



Vln. I

Vln. 2

Vla.

Vc.

BH 129 Behold the Lamb

Verses ♩=100

Willet, arr. R Mondoy 2002

Vln. I

Vln. 2

Vln. I

Vln. 2

12 § Refrain

Vln. I

Vln. 2

Vln. I

Vln. 2

22

4 verses D.C.

Vln. I

Vln. 2

26 Final

Vln. I

Vln. 2

BH 129 Behold the Lamb

Verses ♩=100

Willet, arr. R Mondoy 2002

Vln. I

Vln. I

§ Refrain

Vln. I

Vln. I

4 verses D.C. Final

Vln. I

Vln. I

BH 129 Behold the Lamb

Verses ♩=100

Willet, arr. R Mondoy 2002

Vln. 2

Vln. 2

Vln. 2

§ Refrain

Vln. 2

Vln. 2

Vln. 2

Vln. 2

4 verses D.C. Final

Vln. 2

BH 129 Behold the Lamb

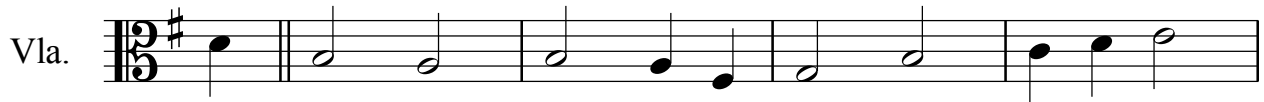
Verses ♩=100

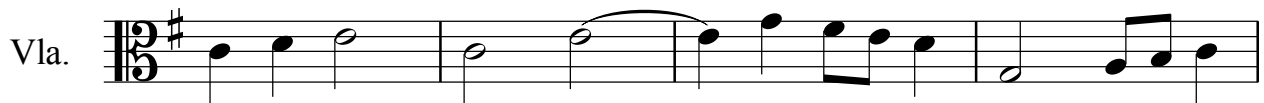
Willet, arr. R Mondoy 2002

Vla. 

Vla. 

§ Refrain

Vla. 

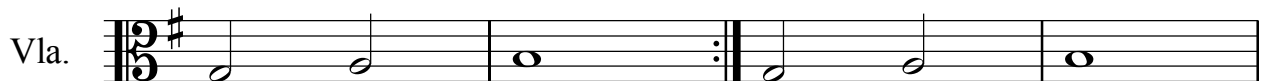
Vla. 

Vla. 

4 verses

D.C.

Final

Vla. 

Vla. 

BH 129 Behold the Lamb

Verses ♩=100

Willet, arr. R Mondoy 2002

Vc.

Vc.

§ Refrain

Vc.

Vc.

Vc.

4 verses D.C. Final

Vc.

Vc.