

# BH 161 Let Justice Roll Like A River

Strong gospel feel ♩=93

Marty Haugen, 1991, arr. R Mondoy 2013

## Introduction

Fl.  
Ob.  
Cl.

9 § REFRAIN  
Fl.  
Ob.  
Cl.

18  
Fl.  
Ob.  
Cl.

27 to vrs. "Cut to end"  
Fl.  
Ob.  
Cl.

BH 161 JusticeRoll\_Wwnds

2

31 Verse 1

Fl.

Ob.

Cl.

41 D.S.

Fl.

Ob.

Cl.

49 Verses 2,3,4

Fl.

Ob.

Cl.

58 D.S.

Fl.

Ob.

Cl.

BH 161 JusticeRoll\_Wwnds

65 **Vrs. 5 RARE to go beyond this point**

Fl.  
Ob.  
Cl.

75

Fl.  
Ob.  
Cl.

81 **Final refrain**

Fl.  
Ob.  
Cl.

88

Fl.  
Ob.  
Cl.

BH 161 JusticeRoll\_Wwnds

4

96

Fl.  
Ob.  
Cl.

This system contains measures 96 through 102. The Flute part features a melodic line with eighth notes and quarter notes. The Oboe part provides a harmonic accompaniment with quarter and eighth notes. The Clarinet part, in a key with two sharps (F# and C#), plays a steady eighth-note accompaniment.

103

Fl.  
Ob.  
Cl.

This system contains measures 103 through 109. The Flute part has a melodic line with dotted half notes and eighth notes, some with slurs. The Oboe part has a similar melodic line with dotted half notes and eighth notes. The Clarinet part continues with a steady eighth-note accompaniment.

111

**slower**

Fl.  
Ob.  
Cl.

This system contains measures 111 through 113. The Flute part has a melodic line with quarter notes and a half note. The Oboe part has a melodic line with quarter notes and a half note. The Clarinet part has a melodic line with quarter notes and a half note. The tempo marking "slower" is placed above the Flute staff.

# BH 161 Let Justice Roll Like A River

Strong gospel feel ♩=93

Marty Haugen, 1991, arr. R Mondoy 2013

## Introduction

Fl.

Fl.

### § REFRAIN

Fl.

Fl.

Fl.

Fl.

Fl.

Fl.

Fl.

Verses 2,3,4

Musical score for Verses 2, 3, and 4, consisting of three staves of music for Flute (Fl.). The first staff begins with a treble clef, a key signature of two flats (B-flat and E-flat), and a common time signature. The melody consists of quarter and eighth notes. The second staff continues the melody. The third staff concludes the section with a double bar line and the instruction "D.S." (Da Capo).

Vrs. 5 RARE to go beyond this point

Musical score for Verse 5, consisting of three staves of music for Flute (Fl.). The first staff begins with a treble clef, a key signature of two flats, and a common time signature. The melody features a mix of quarter and eighth notes. The second staff continues the melody. The third staff concludes the section with a double bar line and the instruction "tr" (trill) above the final notes.

Final refrain

Musical score for the Final Refrain, consisting of five staves of music for Flute (Fl.). The first staff begins with a treble clef, a key signature of two flats, and a common time signature. The melody is characterized by a series of eighth notes with slurs. The second staff continues the melody. The third staff continues the melody. The fourth staff continues the melody. The fifth staff concludes the section with a double bar line and the instruction "slower" above the final notes.

# BH 161 Let Justice Roll Like A River

Strong gospel feel ♩=93

Marty Haugen, 1991, arr. R Mondoy 2013

## Introduction

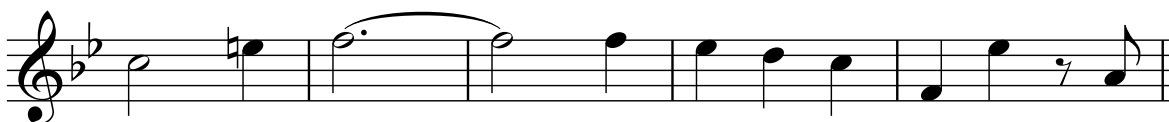
Ob. 

Ob. 

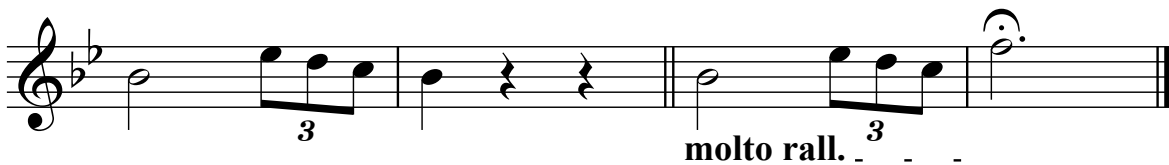
## § REFRAIN

Ob. 

Ob. 

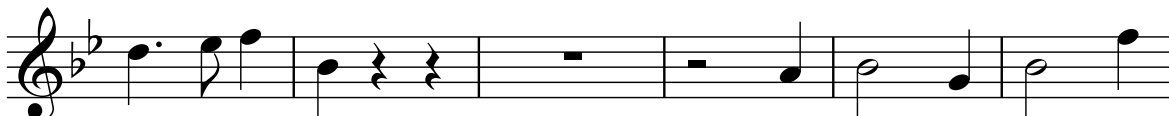
Ob. 


to vrs. "Cut to end"

Ob. 

## Verse 1 2

Ob. 

Ob. 

Ob. 

D.S.

Verses 2,3,4 BH 161 JusticeRoll\_Ob

Ob.

Vrs. 5 RARE to go beyond this point

Ob.

Final refrain

Ob.



# BH 161 Let Justice Roll Like A River

Strong gospel feel ♩=93

Marty Haugen, 1991, arr. R Mondoy 2013

## Introduction

Cl.

Cl.

## § REFRAIN

Cl.

Cl.

Cl.

Cl.   
to vrs. "Cut to end"  
molto rall. 3

Cl.   
Verse 1  
2

Cl.   
D.S.

Verses 2,3,4

Cl.

Cl.

Cl. D.S.

Vrs. 5 RARE to go beyond this point

2

Cl.

Cl.

Cl.

Final refrain

Cl.

Cl.

Cl.

Cl.

Cl.

Cl. slower

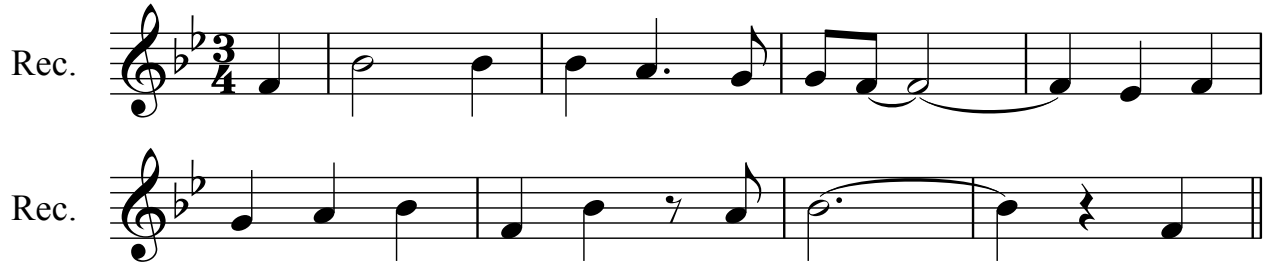
Cl.

# BH 161 Let Justice Roll Like A River

Strong gospel feel ♩=93

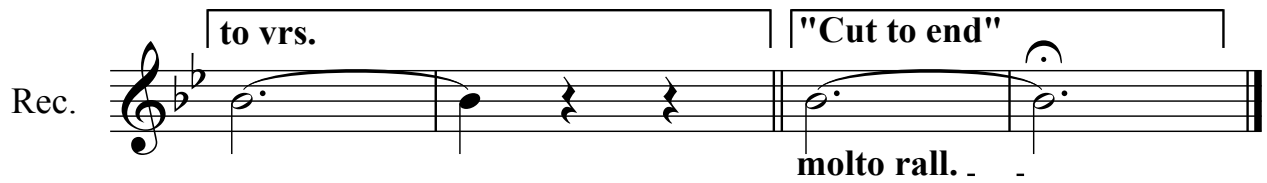
Marty Haugen, 1991, arr. R Mondoy 2013

## Introduction

Rec. 

## REFRAIN

Rec. 

Rec. 

Rec. 

Rec. 

BH 161 JusticeRoll\_Recdr

2

Verses 2,3,4

Rec. 

Rec. 

Rec. 

D.S.

Vrs. 5 RARE to go beyond this point

Rec. 

Rec. 

Rec. 

Final refrain

Rec. 

Rec. 

Rec. 

Rec. 

slower

Rec. 

# BH 161 Let Justice Roll Like A River

Strong gospel feel  $\text{♩} = 93$

Marty Haugen, 1991, arr. R Mondoy 2013

## Introduction

Musical notation for the Introduction, featuring Horn (Hn.) and Trumpet (Tpt.) parts. The key signature is one flat (Bb) and the time signature is 3/4. The Horn part begins with a melodic line, while the Trumpet part provides a rhythmic accompaniment.

Musical notation for the Refrain, starting at measure 9. It includes a repeat sign and a first ending bracket labeled '7'. The Horn part has a melodic line, and the Trumpet part has a rhythmic accompaniment.

Continuation of the musical notation for Horn and Trumpet parts, showing further melodic and rhythmic development.

Musical notation for Horn and Trumpet parts, including performance directions: 'to vrs.' and 'Cut to end' with 'molto rall.' (rallentando) markings.

Musical notation for Verse 1, starting at measure 31. It includes a first ending bracket labeled '14' and a 'D.S.' (Da Capo) instruction.

Musical notation for Verses 2, 3, and 4, starting at measure 49. It includes first ending brackets labeled '15' and a 'D.S.' instruction.

65 **Vrs. 5 RARE to go beyond this point**  
**14**

Hn.  
Tpt.

**Final refrain**  
81 **7**

Hn.  
Tpt.

94

Hn.  
Tpt.

103 **2** **2** **slower**

Hn.  
Tpt.

# BH 161 Let Justice Roll Like A River

Strong gospel feel ♩=93

## Introduction

Marty Haugen, 1991, arr. R Mondoy 2013

Hn.

## REFRAIN

Hn.

Hn.

Hn.

Hn. **Verse 1** **14** **D.S.**

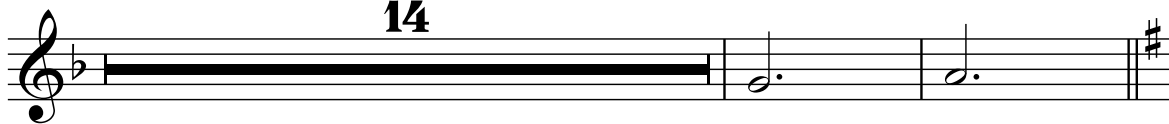
Hn. **Verses 2,3,4** **15** **D.S.**

BH 161 JusticeRoll\_Hrn

2

Vrs. 5 RARE to go beyond this point

14


Hn. 

Final refrain

7

Hn. 

Hn. 

Hn. 

2

slower

Hn. 



# BH 161 Let Justice Roll Like A River

Strong gospel feel ♩=93

Marty Haugen, 1991, arr. R Mondoy 2013

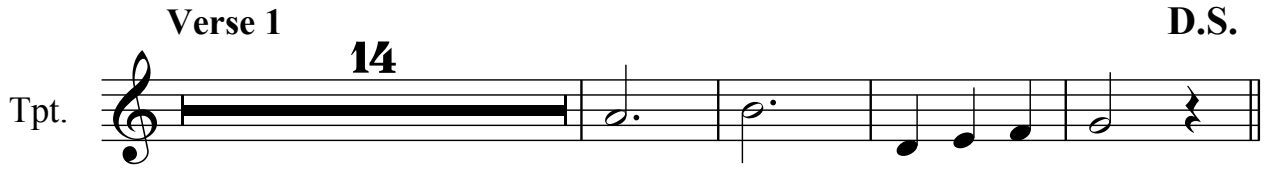
## Introduction

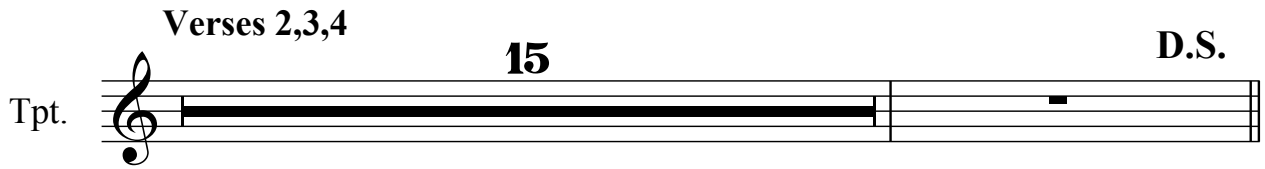
Tpt. 

## REFRAIN

Tpt. 

Tpt. 

Tpt. **Verse 1** **14** **D.S.** 

Tpt. **Verses 2,3,4** **15** **D.S.** 

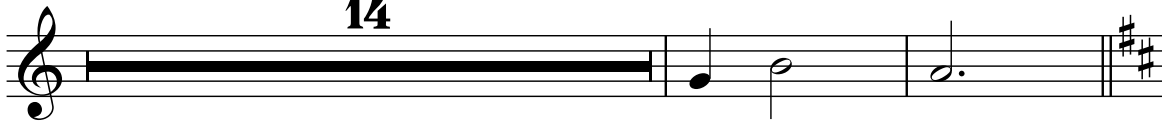
BH 161 JusticeRoll\_Trp

2

Vrs. 5 RARE to go beyond this point

14

Tpt.



Final refrain

Tpt.



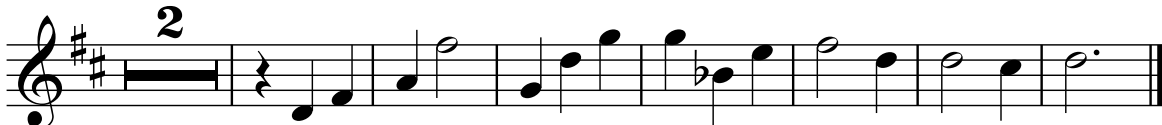
Tpt.



Tpt.



Tpt.



# BH 161 Let Justice Roll Like A River

Strong gospel feel ♩=93

Marty Haugen, 1991, arr. R Mondoy 2013

## Introduction

9      § REFRAIN

18

27

to vrs.	"Cut to end"

BH 161 JusticeRoll\_3Stg

2

Verse 1

31 pizz.

Vln.

Vla.

Vc.

38 arco

Vln.

Vla.

Vc.

44 D.S.

Vln.

Vla.

Vc.

49 **Verses 2,3,4**

56 **D.S.**

65 **Vrs. 5 RARE to go beyond this point**

pizz. arco

BH 161 JusticeRoll\_3Stg

4

74

Vln. Vla. Vc.

This system contains measures 74 through 80. It features three staves: Violin (Vln.) in treble clef, Viola (Vla.) in alto clef, and Violoncello (Vc.) in bass clef. The key signature has two flats (B-flat and E-flat). The music includes various note values, rests, and dynamic markings such as *mf* and *f*. A double bar line is present at the end of measure 80.

81 **Final refrain**

Vln. Vla. Vc.

This system contains measures 81 through 87, labeled as the "Final refrain". It features three staves: Violin (Vln.) in treble clef, Viola (Vla.) in alto clef, and Violoncello (Vc.) in bass clef. The key signature has two flats. The music includes various note values, rests, and dynamic markings such as *f*. A double bar line is present at the end of measure 87.

88

Vln. Vla. Vc.

This system contains measures 88 through 94. It features three staves: Violin (Vln.) in treble clef, Viola (Vla.) in alto clef, and Violoncello (Vc.) in bass clef. The key signature has two flats. The music includes various note values, rests, and dynamic markings such as *f*. A double bar line is present at the end of measure 94.

BH 161 JusticeRoll\_3Stg

95

Vln.

Vla.

Vc.

Detailed description: This system contains measures 95 through 104. It features three staves: Violin (Vln.) in treble clef, Viola (Vla.) in alto clef, and Violoncello (Vc.) in bass clef. The music is written in a common time signature. The Violin part has a melodic line with several slurs and accents. The Viola part provides harmonic support with chords and moving lines. The Cello part has a steady bass line. The system concludes with a double bar line.

105

slower

Vln.

Vla.

Vc.

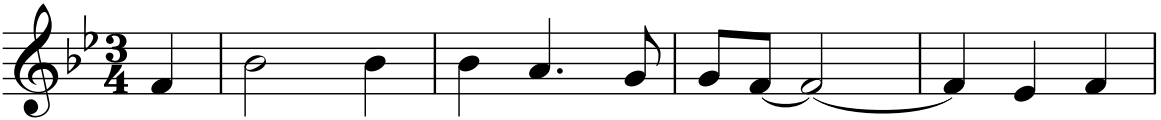
Detailed description: This system contains measures 105 through 114. It features the same three staves as the previous system. The tempo marking 'slower' is placed above the staff. The music continues with similar textures, but with a more pronounced sense of deceleration. The Violin part has a prominent melodic line with a long slur. The Viola and Cello parts continue their respective parts. The system concludes with a double bar line.

# BH 161 Let Justice Roll Like A River

Strong gospel feel ♩=93

## Introduction

Marty Haugen, 1991, arr. R Mondoy 2013

Vln. 

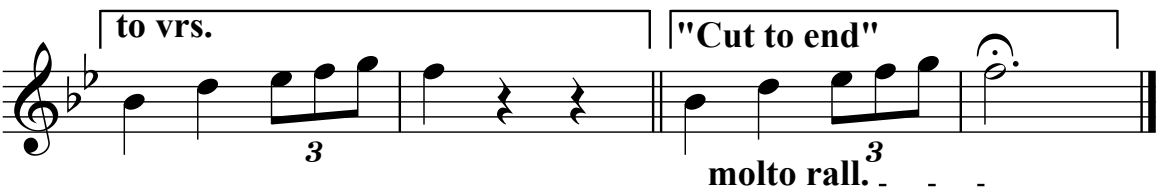
Vln. 


## § REFRAIN

Vln. 

Vln. 

Vln. 

Vln.   
to vrs. "Cut to end"  
3 molto rall. 3

Vln.   
Verse 1  
pizz.

Vln.   
arco D.S.

Vln. 



BH 161 JusticeRoll\_Vln

2  
Vln. **Verses 2,3,4**

Vln.

Vln. **D.S.**

**Vrs. 5 RARE to go beyond this point**

pizz.

Vln.

Vln. arco

Vln.

**Final refrain**

Vln. **Final refrain**

Vln.

Vln.

Vln. **slower**

# BH 161 Let Justice Roll Like A River

Strong gospel feel ♩=93

Marty Haugen, 1991, arr. R Mondoy 2013

## Introduction

Vla.

Vla.

## § REFRAIN

Vla.

Vla.

Vla.

Vla.

*molto rall. .*

## Verse 1 pizz.

Vla.

arco

Vla.

**D.S.**

Vla.

Verses 2,3,4 BH 161 JusticeRoll\_Vla

Vla. 

Vla. 

Vla. 

D.S.

Vrs. 5 RARE to go beyond this point  
pizz.

Vla. 

Vla. 

Vla. 

arco

Final refrain

Vla. 

Vla. 

Vla. 

Vla. 

Vla. 

slower

BH 161 JusticeRoll\_Vlncl

# BH 161 Let Justice Roll Like A River

Strong gospel feel ♩=93

## Introduction

Marty Haugen, 1991, arr. R Mondoy 2013

Vc.

## § REFRAIN

Vc.

Vc.

Vc.

Vc.

to vrs. "Cut to end"  
3 molto rall.

Vc.

Vc.

D.S.

Vc.

BH 161 JusticeRoll\_Vlncl

2  
Vc. **Verses 2,3,4**

Vc. **D.S.**

Vc.

Vc.

Detailed description: This system contains four staves of music. The top staff is a second violin part (Vc.) with a '2' above it. The next three staves are vocal parts (Vc.). A bracket above the first two vocal staves is labeled 'Verses 2,3,4'. The third vocal staff ends with a double bar line and the instruction 'D.S.'.

Vc. **Vrs. 5 RARE to go beyond this point**

Vc.

Detailed description: This system contains three staves of music. The top staff is a second violin part (Vc.) with a bracket above it labeled 'Vrs. 5 RARE to go beyond this point'. The next two staves are vocal parts (Vc.).

Vc. **Final refrain**

Vc.

Vc.

Vc.

Vc. **slower**

Detailed description: This system contains five staves of music. The top staff is a second violin part (Vc.) with a bracket above it labeled 'Final refrain'. The next four staves are vocal parts (Vc.). The bottom vocal staff ends with the instruction 'slower'.