

‘Āinahau

Chang-a-lang (Hawaiian cut time), straight eighths ♩=66

‘Ōlelo me ka leo: Likelike (1851-1887), 1880s

transcribed after earliest publications; mm. 7-8; 15-16 after common practice. Note annotations Text: **He Mele Aloha**, p.8

Rose colored notation : Kumukahi (2007) and ,common practice

Piano arrangement by Robert M. Mondoy, 2013

Regular notation: Earliest publications

1. Na ka wa - i lū - ki - ni, wai a - nu - he - a o ka ro - se E ho - 'o -
2. Na ka ma - ka - ni a - he - a - he i pā mai ma kai I la - we

pē nei i ka li - ko o nā pu - a Na ka ma - nu pī - ka - ke, ma - nu
mai i ke o - na - o - na lī - po - a E ho - 'o - i - po ho - 'o - ni - po me ke

Earliest publications:
Main staff: common practice

hu - lu me - le - me - le Nā kā - hi - ko i - a o ku - 'u ho - me Na - ni
'a - la ku - 'u ho - me Ku - 'u ho - me, ku - 'u ho - me i ka 'i - u - 'i - u

Earliest publications:
Main staff: common practice

wa - le ku - 'u ho - me 'o 'Āi - na - hau ka 'i - u I ka

ho - lu na - pe a ka lau o ka ni - u I ka u - lu - we - hi - we - hi i ke

Earliest publications:
Main staff: common practice

'a - la o nā pu - a Ku - 'u ho - me, ku - 'u ho - me i ka 'i - u - 'i - u



‘Ōlelo me ka leo: Likelike (1851-1887), 1880s. This typeset proffered for educational purposes only. Strum chart available upon request.

All typesets ©2014 Mondoy Music 1555 Pōhaku St B-104 Honolulu HI 96817 (808) 845-8405 www.mondoymusic.com

In spirit of efficient preservation, please inform me of errors or other useful information. Please contact before photocopying. *Mahalo!*

Ka Lehua I Milia

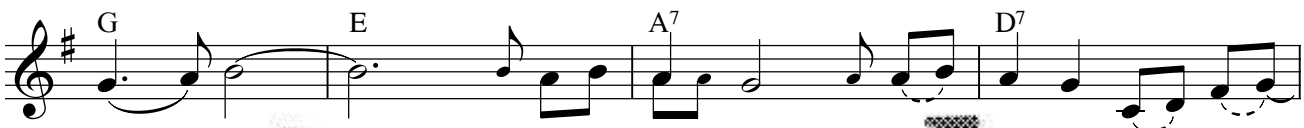
Relaxed chang-a-lang or chalang-a-lang, swing or stright eighths ♩=100

‘Ōlelo: Mary Kawena Pukui (1895-1986); Leo: Madeline "Maddy" K. Lam (1910-1985), 1952
Transcribed after Bill Kaiwa (1978). Text: **He Mele Aloha**, p. 91



1. 'I - ke ma - ka i ka na - ni o
2. He we - li - na, na ke a - lo - ha e ho - 'o - ni - po
3. Ku - 'u lei, ku - 'u pu - a na - ni mae
4. E ho - 'o - la - le ma - i a - na e na - u - e
5. Ha - 'i - na 'i - a ma - i a - na ka - pu -

ossia (Ku'uipo Kumukahi, 1998):



- u - ka Ka le - hu - a i m - li - a e ka u - a
 ne - i E hā 'o - ni nei iā lo - ko o ka pu - 'u -
 'o - le No - he - no he - a ka ma - ka a ka
 a - ku E ku a le - i i ko a lo ha ma - ka -
 a - ma Ka le hu a i m - li a e ka u - a



- no - e
 wa - i
 i - po
 ma - e
 no - e.



‘Ōlelo: Mary Kawena Pukui (1895-1986), Leo: Maddy Lam (1910-1985), 1952. ©1956 Criterion Music

This typeset proffered for educational purposes only. Strum chart available upon request.

All typesets ©2014 Mondoy Music 1555 Pōhaku St B-104 Honolulu HI 96817 (808) 845-8405 www.mondoymusic.com

In spirit of efficient preservation, please inform me of errors or other useful information. Please contact before photocopying. *Mahalo!*