

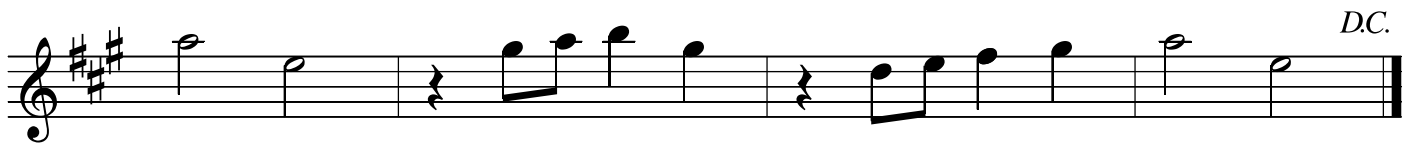
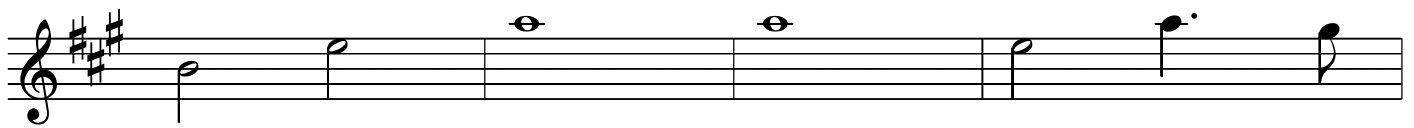
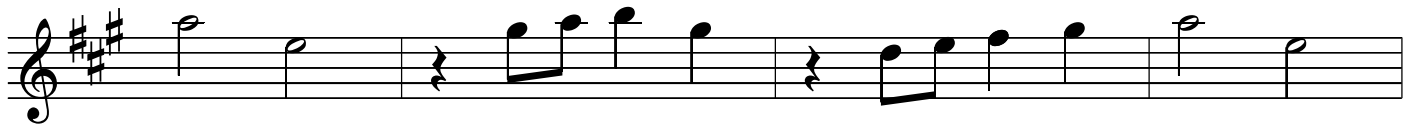
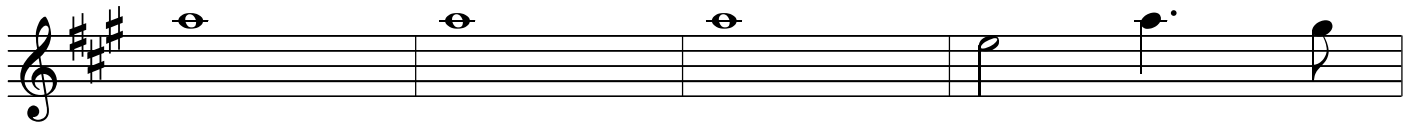
Clarinet  
Refrain; Stately

# Ps 67 O God Be Gracious [Makahiki]

2002 Christmas  
(Mondoy)



3 verses; Allegretto



*D.C.*

*rit.*

# Ps 67 O God Be Gracious [Makahiki]

Flute

Refrain; Stately

3 verses; Allegretto

# Ps 67 O God Be Gracious [Makahiki]

2002 Christmas

(Mondoy)

Recorder, Flute 2

Refrain; Stately



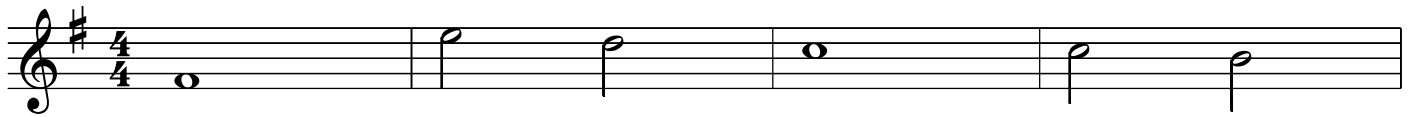
3 verses; Allegretto



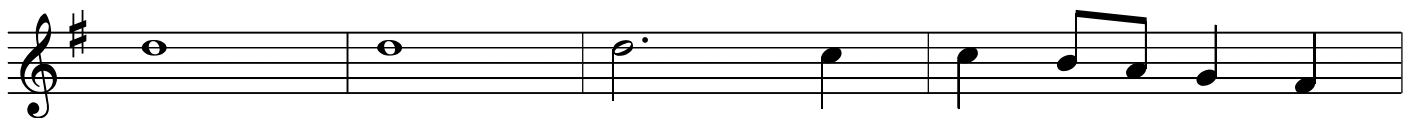
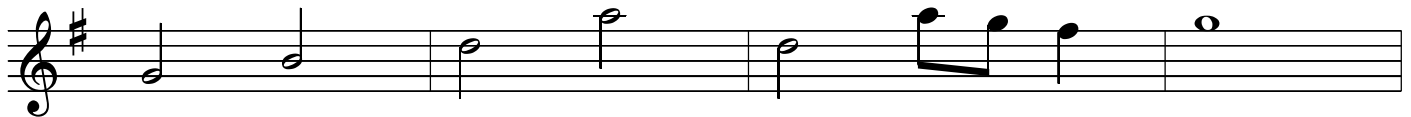
Oboe  
Refrain; Stately

# Ps 67 O God Be Gracious [Makahiki]

2002 Christmas  
(Mondoy)



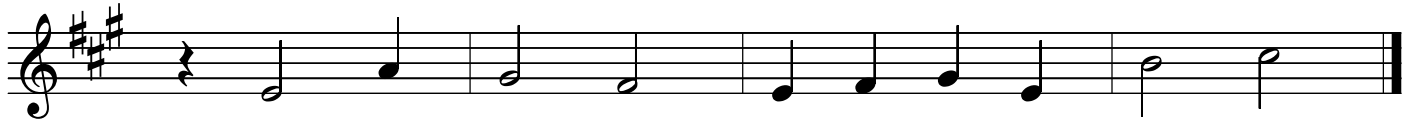
3 verses; Allegretto



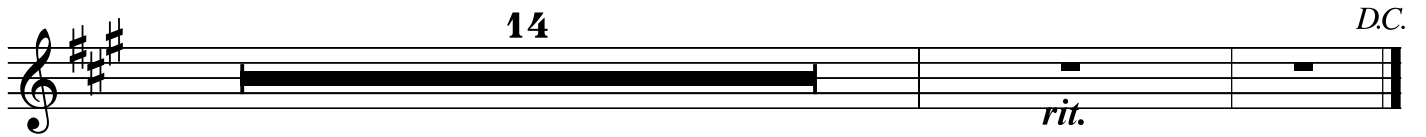
Trumpets  
Refrain; Stately

# Ps 67 O God Be Gracious [Makahiki]

2002 Christmas  
(Mondoy)



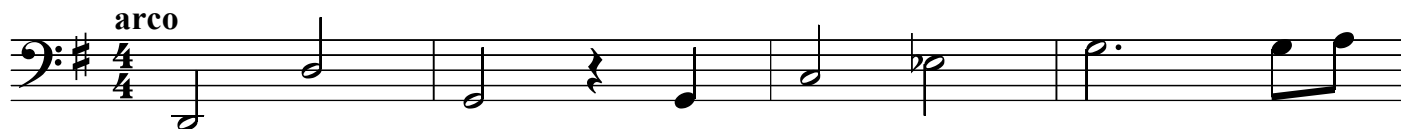
3 verses; Allegretto



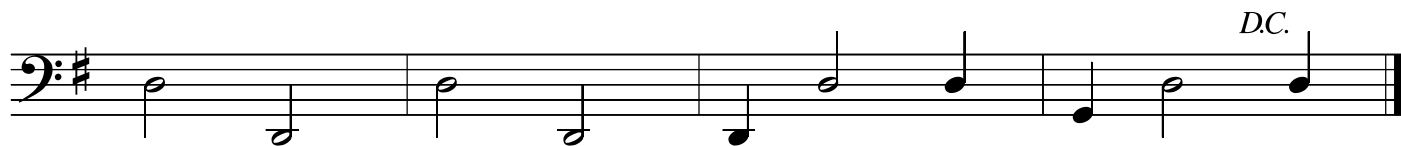
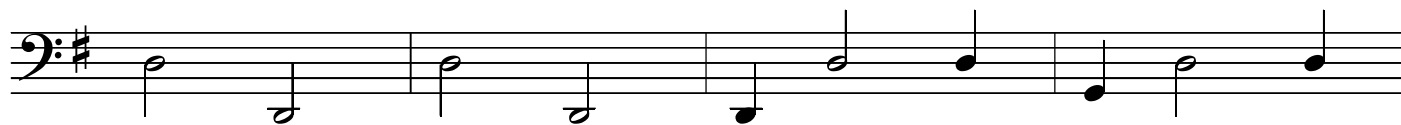
Bass, Cello  
Refrain; Stately

# Ps 67 O God Be Gracious [Makahiki]

2002 Christmas  
(Mondoy)



3 verses; Allegretto



*rit.*

# Ps 67 O God Be Gracious [Makahiki]

2002 Christmas  
(Mondoy)

Violin. Viola

Refrain; Stately

arco

Vn

Va

arco

This system shows the beginning of the Refrain. The Violin part (Vn) is in treble clef with a key signature of one sharp (F#) and a 4/4 time signature. The Viola part (Va) is in bass clef with the same key signature and time signature. Both parts are marked 'arco'. The music consists of a series of eighth and quarter notes, with some rests.

3 Verses; Allegretto

pizz

Vn

Va

pizz

This system shows the beginning of the three verses. Both Violin and Viola parts are marked 'pizz' (pizzicato). The Violin part features a rhythmic pattern of eighth notes and quarter notes. The Viola part provides a harmonic accompaniment with similar rhythmic values.

Vn

Va

This system continues the three verses. The Violin part has a melodic line with some rests, while the Viola part continues the accompaniment. The rhythmic pattern remains consistent with the previous system.

Vn

Va

*rit.*

*rit.*

*D.C.*

*D.C.*

This system concludes the three verses. Both parts end with a *rit.* (ritardando) marking and a double bar line. The Violin part has a *D.C.* (Da Capo) instruction above the final measure, and the Viola part has a *D.C.* instruction below the final measure.